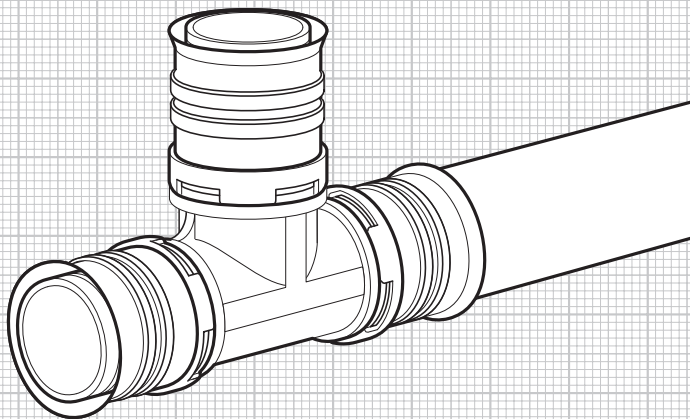
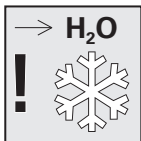
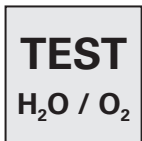
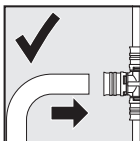
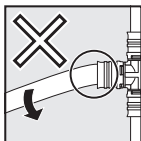
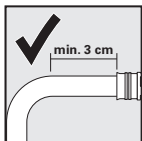
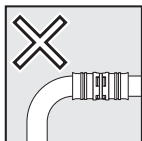
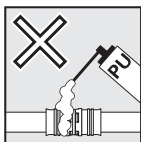
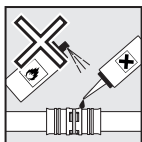
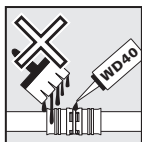
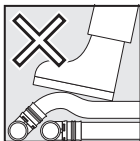
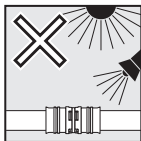
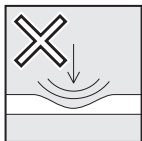
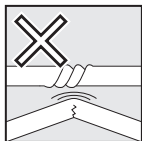


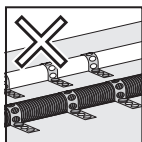
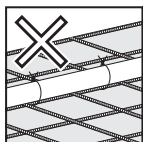
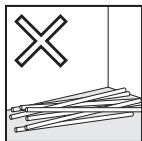
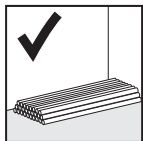
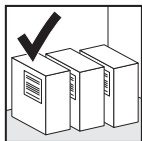
Montageanleitung / Mounting instructions

alpex[®]



PPSU-/Messingverbinder und Rohre
PPSU/brass connectors and pipes





DE, EN, ES, FR, PL, TR

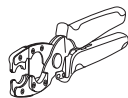
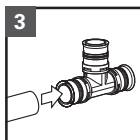
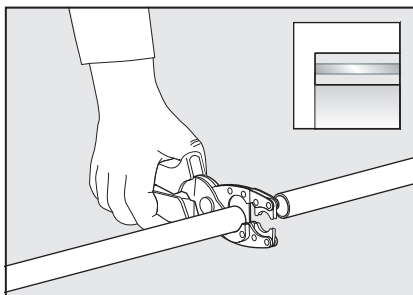
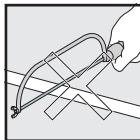
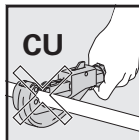
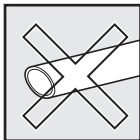
Technische Information / Technical Information

alpex®



Verarbeitungsrichtlinien / Installation guidelines

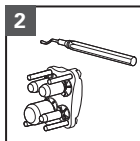
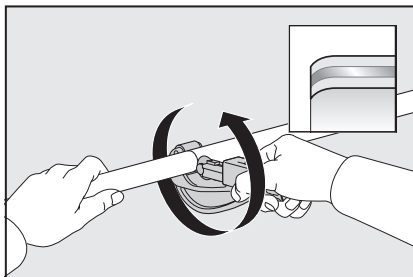
1



Dim.

12 – 20 mm

79000320



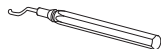
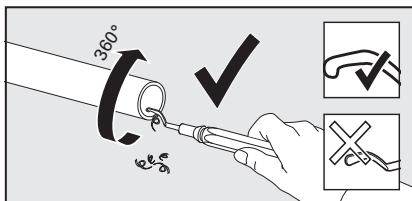
Dim.

14 – 40

79000225

14 – 75

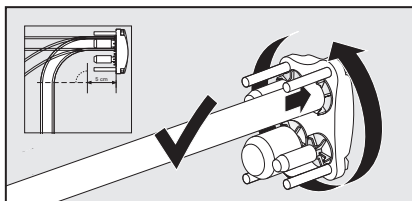
79000228

2a

Dim.

14 – 75

79002208

2b Optional

Dim.

16/20/26/32

79002213

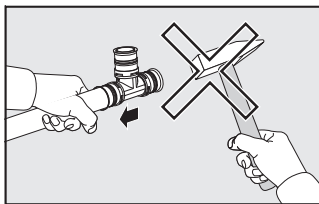
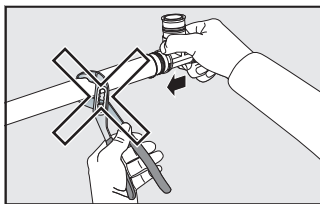
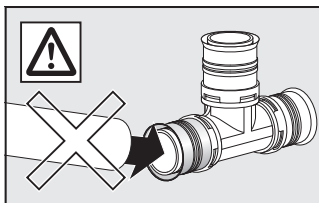
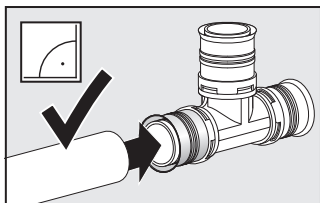
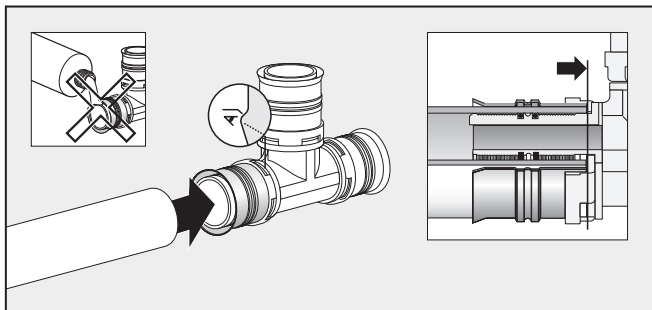


Dim.

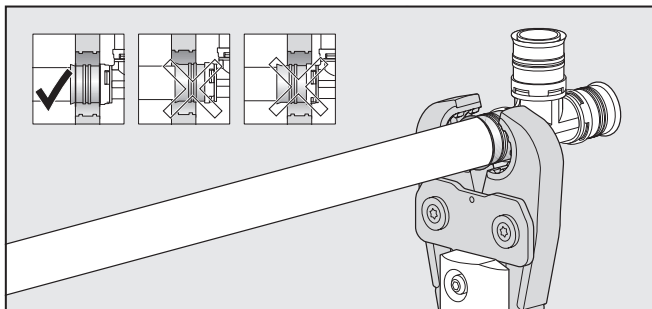
16/20/26/32

79002250

3



4



Fitting

F

TH

B

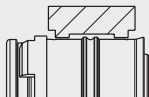
alpex

✓

✓

✓

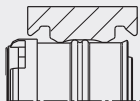
F-Kontur / F-contour

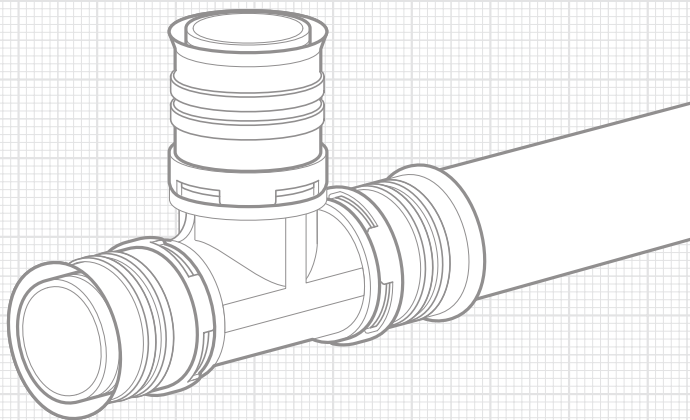


TH-Kontur / TH-contour



B-Kontur / B-contour





FRÄNKISCHE

FRÄNKISCHE Rohrwerke Gebr. Kirchner GmbH & Co. KG | Hellinger Str.1 | 97486 Königsberg/Germany
Phone +49 9525 88-0 | Fax +49 9525 88-2413 | marketing@fraenkische.de | www.fraenkische.com

DE/EN.70404/1.11.24 | Cat no. 5000-1956-00 | Subject to change without notice | 11/2024